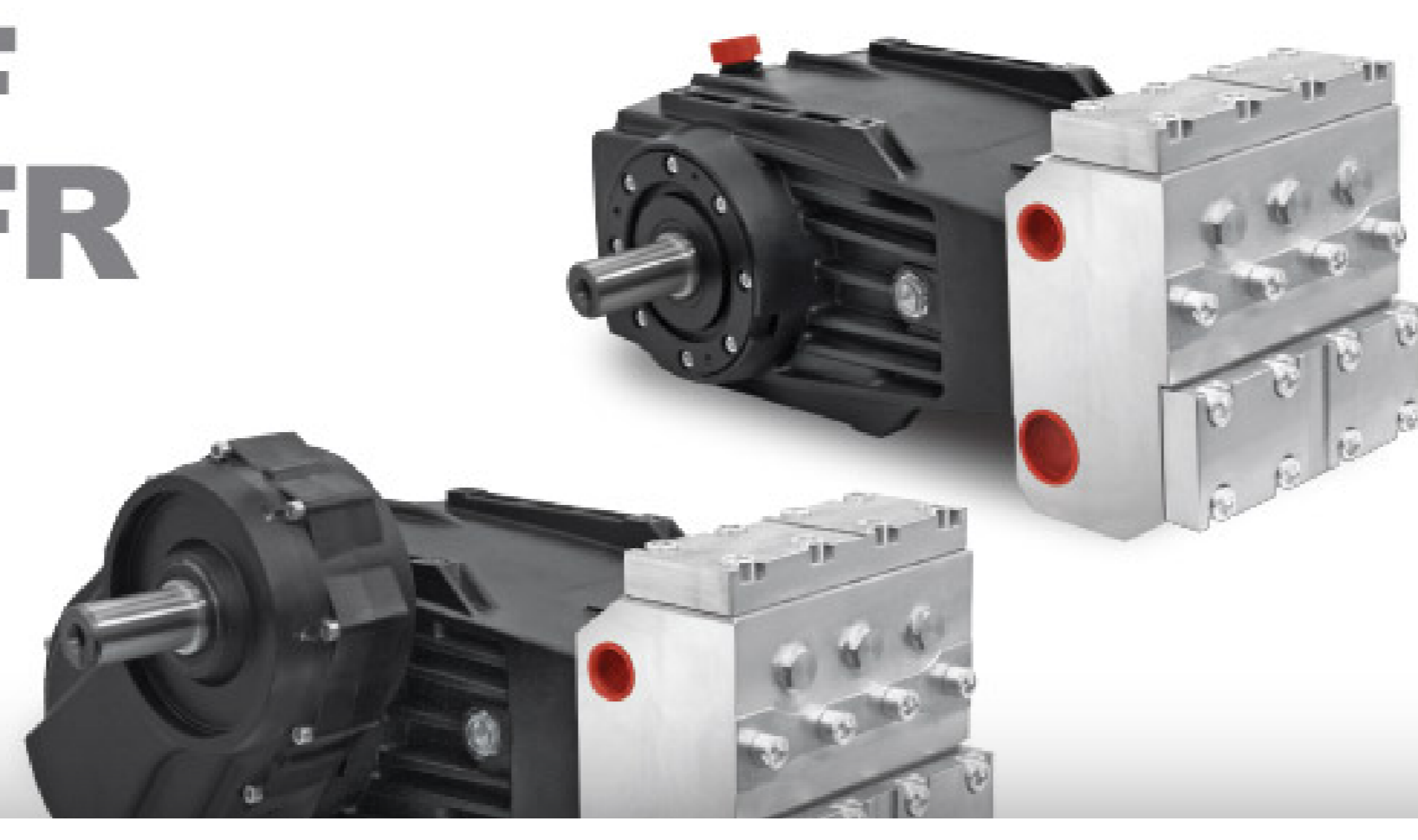


## EF - EFR

# EF EFR



We inform that the cookies used in this website are "technical cookies" necessary in order to improve browsing, but also "analysis cookies" to make statistical analyses and "third party cookies". You can get more details and block the use of all or just some cookies, reading the extended privacy policy. If you continue browsing this site, it is implied that you express your consent to the use of the aforementioned cookies.

### Pumps | Accessories | Applications and Uses | More Informations

#### EF - EFR

**Triplex plunger pump in line**

- Pump body: aluminium alloy
- Symmetric crankcase featuring top and bottom fixing for easy right to left shaft conversion
- Head: stainless steel
- Camshaft: forged steel
- Splash lubrication
- Shaft support tapered roller bearings oversized for long duration
- Connecting rods: steel with thin-shell bearings
- Guiding piston: stainless steel
- Solid ceramic plungers
- PATENTED stainless steel suction/delivery valves featuring spherical design of sealing areas
- \*On request Stainless Steel AISI 316
- Seals: high dependability with low-pressure lubrication and recirculation chamber
- Versions in direct drive mount or with side gearbox available in 3 gear ratios and positionable on the right or left of the pump at 0° - 45° - 90° - 135° - 180° from the horizontal plane (see drawing)

**Routine maintenance includes easy operations such as: oil check & change, check and possible replacement of seals.**

Models	Drawings	Chart	Installation Scheme																																																																																																																																																																																																																																																																																																																																				
<table border="1"> <thead> <tr> <th>Code</th> <th>Model</th> <th>l/min</th> <th>l/min</th> <th>US gpm</th> <th>bar</th> <th>psi</th> <th>MPa</th> <th>KW</th> <th>HP</th> <th>kg</th> <th>lb</th> </tr> </thead> <tbody> <tr><td>6919 0025</td><td>EF 25/250</td><td>850</td><td>75</td><td>198</td><td>280</td><td>4050</td><td>28</td><td>41</td><td>55</td><td>90</td><td>198</td></tr> <tr><td>6919 0006</td><td>EF 88/250</td><td>1000</td><td>88</td><td>23</td><td>250</td><td>3625</td><td>25</td><td>43</td><td>59</td><td>90</td><td>198</td></tr> <tr><td>6919 0020</td><td>EFR 88/250</td><td>1500</td><td>88</td><td>23</td><td>250</td><td>3625</td><td>25</td><td>43</td><td>59</td><td>105</td><td>231</td></tr> <tr><td>6919 0021</td><td>EFR 80/250</td><td>1800</td><td>88</td><td>23</td><td>250</td><td>3625</td><td>25</td><td>43</td><td>59</td><td>105</td><td>231</td></tr> <tr><td>6919 0022</td><td>EFR 80/250</td><td>2200</td><td>88</td><td>23</td><td>250</td><td>3625</td><td>25</td><td>43</td><td>59</td><td>105</td><td>231</td></tr> <tr><td>6919 0002</td><td>EF 111/210</td><td>1000</td><td>111</td><td>29</td><td>210</td><td>3045</td><td>21</td><td>46</td><td>62</td><td>90</td><td>198</td></tr> <tr><td>6919 0014</td><td>EFR 111/210</td><td>1500</td><td>111</td><td>29</td><td>210</td><td>3045</td><td>21</td><td>46</td><td>62</td><td>105</td><td>231</td></tr> <tr><td>6919 0015</td><td>EFR 111/210</td><td>1800</td><td>111</td><td>29</td><td>210</td><td>3045</td><td>21</td><td>46</td><td>62</td><td>105</td><td>231</td></tr> <tr><td>6919 0016</td><td>EFR 111/210</td><td>2200</td><td>111</td><td>29</td><td>210</td><td>3045</td><td>21</td><td>46</td><td>62</td><td>105</td><td>231</td></tr> <tr><td>6919 0007</td><td>EF 123/150</td><td>800</td><td>123</td><td>33</td><td>150</td><td>2175</td><td>15</td><td>36</td><td>49</td><td>90</td><td>198</td></tr> <tr><td>6919 0023</td><td>EFR 123/150</td><td>1500</td><td>123</td><td>33</td><td>150</td><td>2175</td><td>15</td><td>36</td><td>49</td><td>105</td><td>231</td></tr> <tr><td>6919 0024</td><td>EFR 123/150</td><td>1800</td><td>123</td><td>33</td><td>150</td><td>2175</td><td>15</td><td>36</td><td>49</td><td>105</td><td>231</td></tr> <tr><td>6919 0010</td><td>EF 127/180</td><td>1000</td><td>127</td><td>34</td><td>180</td><td>2610</td><td>18</td><td>45</td><td>61</td><td>90</td><td>198</td></tr> <tr><td>6919 0032</td><td>EFR 127/180</td><td>1500</td><td>127</td><td>34</td><td>180</td><td>2610</td><td>18</td><td>45</td><td>61</td><td>105</td><td>231</td></tr> <tr><td>6919 0033</td><td>EFR 127/180</td><td>1800</td><td>127</td><td>34</td><td>180</td><td>2610</td><td>18</td><td>45</td><td>61</td><td>105</td><td>231</td></tr> <tr><td>6919 0034</td><td>EFR 127/180</td><td>2200</td><td>127</td><td>34</td><td>180</td><td>2610</td><td>18</td><td>45</td><td>61</td><td>105</td><td>231</td></tr> <tr><td>6919 0008</td><td>EF 130/150</td><td>900</td><td>130</td><td>37</td><td>150</td><td>2175</td><td>15</td><td>41</td><td>55</td><td>90</td><td>198</td></tr> <tr><td>6919 0003</td><td>EF 154/150</td><td>1000</td><td>154</td><td>41</td><td>150</td><td>2175</td><td>15</td><td>45</td><td>62</td><td>90</td><td>198</td></tr> <tr><td>6919 0017</td><td>EFR 154/150</td><td>1500</td><td>154</td><td>41</td><td>150</td><td>2175</td><td>15</td><td>45</td><td>62</td><td>105</td><td>231</td></tr> <tr><td>6919 0018</td><td>EFR 154/150</td><td>1800</td><td>154</td><td>41</td><td>150</td><td>2175</td><td>15</td><td>45</td><td>62</td><td>105</td><td>231</td></tr> <tr><td>6919 0019</td><td>EFR 154/150</td><td>2200</td><td>154</td><td>41</td><td>150</td><td>2175</td><td>15</td><td>45</td><td>62</td><td>105</td><td>231</td></tr> <tr><td>6919 0009</td><td>EF 183/120</td><td>900</td><td>183</td><td>48</td><td>120</td><td>1740</td><td>12</td><td>43</td><td>59</td><td>90</td><td>198</td></tr> <tr><td>6919 0001</td><td>EF 183/120</td><td>1000</td><td>183</td><td>48</td><td>120</td><td>1740</td><td>12</td><td>43</td><td>59</td><td>90</td><td>198</td></tr> <tr><td>6919 0011</td><td>EFR 183/120</td><td>1500</td><td>183</td><td>48</td><td>120</td><td>1740</td><td>12</td><td>43</td><td>59</td><td>105</td><td>231</td></tr> <tr><td>6919 0012</td><td>EFR 183/120</td><td>1800</td><td>183</td><td>48</td><td>120</td><td>1740</td><td>12</td><td>43</td><td>59</td><td>105</td><td>231</td></tr> <tr><td>6919 0013</td><td>EFR 183/120</td><td>2200</td><td>183</td><td>48</td><td>120</td><td>1740</td><td>12</td><td>43</td><td>59</td><td>105</td><td>231</td></tr> </tbody> </table>	Code	Model	l/min	l/min	US gpm	bar	psi	MPa	KW	HP	kg	lb	6919 0025	EF 25/250	850	75	198	280	4050	28	41	55	90	198	6919 0006	EF 88/250	1000	88	23	250	3625	25	43	59	90	198	6919 0020	EFR 88/250	1500	88	23	250	3625	25	43	59	105	231	6919 0021	EFR 80/250	1800	88	23	250	3625	25	43	59	105	231	6919 0022	EFR 80/250	2200	88	23	250	3625	25	43	59	105	231	6919 0002	EF 111/210	1000	111	29	210	3045	21	46	62	90	198	6919 0014	EFR 111/210	1500	111	29	210	3045	21	46	62	105	231	6919 0015	EFR 111/210	1800	111	29	210	3045	21	46	62	105	231	6919 0016	EFR 111/210	2200	111	29	210	3045	21	46	62	105	231	6919 0007	EF 123/150	800	123	33	150	2175	15	36	49	90	198	6919 0023	EFR 123/150	1500	123	33	150	2175	15	36	49	105	231	6919 0024	EFR 123/150	1800	123	33	150	2175	15	36	49	105	231	6919 0010	EF 127/180	1000	127	34	180	2610	18	45	61	90	198	6919 0032	EFR 127/180	1500	127	34	180	2610	18	45	61	105	231	6919 0033	EFR 127/180	1800	127	34	180	2610	18	45	61	105	231	6919 0034	EFR 127/180	2200	127	34	180	2610	18	45	61	105	231	6919 0008	EF 130/150	900	130	37	150	2175	15	41	55	90	198	6919 0003	EF 154/150	1000	154	41	150	2175	15	45	62	90	198	6919 0017	EFR 154/150	1500	154	41	150	2175	15	45	62	105	231	6919 0018	EFR 154/150	1800	154	41	150	2175	15	45	62	105	231	6919 0019	EFR 154/150	2200	154	41	150	2175	15	45	62	105	231	6919 0009	EF 183/120	900	183	48	120	1740	12	43	59	90	198	6919 0001	EF 183/120	1000	183	48	120	1740	12	43	59	90	198	6919 0011	EFR 183/120	1500	183	48	120	1740	12	43	59	105	231	6919 0012	EFR 183/120	1800	183	48	120	1740	12	43	59	105	231	6919 0013	EFR 183/120	2200	183	48	120	1740	12	43	59	105	231			
Code	Model	l/min	l/min	US gpm	bar	psi	MPa	KW	HP	kg	lb																																																																																																																																																																																																																																																																																																																												
6919 0025	EF 25/250	850	75	198	280	4050	28	41	55	90	198																																																																																																																																																																																																																																																																																																																												
6919 0006	EF 88/250	1000	88	23	250	3625	25	43	59	90	198																																																																																																																																																																																																																																																																																																																												
6919 0020	EFR 88/250	1500	88	23	250	3625	25	43	59	105	231																																																																																																																																																																																																																																																																																																																												
6919 0021	EFR 80/250	1800	88	23	250	3625	25	43	59	105	231																																																																																																																																																																																																																																																																																																																												
6919 0022	EFR 80/250	2200	88	23	250	3625	25	43	59	105	231																																																																																																																																																																																																																																																																																																																												
6919 0002	EF 111/210	1000	111	29	210	3045	21	46	62	90	198																																																																																																																																																																																																																																																																																																																												
6919 0014	EFR 111/210	1500	111	29	210	3045	21	46	62	105	231																																																																																																																																																																																																																																																																																																																												
6919 0015	EFR 111/210	1800	111	29	210	3045	21	46	62	105	231																																																																																																																																																																																																																																																																																																																												
6919 0016	EFR 111/210	2200	111	29	210	3045	21	46	62	105	231																																																																																																																																																																																																																																																																																																																												
6919 0007	EF 123/150	800	123	33	150	2175	15	36	49	90	198																																																																																																																																																																																																																																																																																																																												
6919 0023	EFR 123/150	1500	123	33	150	2175	15	36	49	105	231																																																																																																																																																																																																																																																																																																																												
6919 0024	EFR 123/150	1800	123	33	150	2175	15	36	49	105	231																																																																																																																																																																																																																																																																																																																												
6919 0010	EF 127/180	1000	127	34	180	2610	18	45	61	90	198																																																																																																																																																																																																																																																																																																																												
6919 0032	EFR 127/180	1500	127	34	180	2610	18	45	61	105	231																																																																																																																																																																																																																																																																																																																												
6919 0033	EFR 127/180	1800	127	34	180	2610	18	45	61	105	231																																																																																																																																																																																																																																																																																																																												
6919 0034	EFR 127/180	2200	127	34	180	2610	18	45	61	105	231																																																																																																																																																																																																																																																																																																																												
6919 0008	EF 130/150	900	130	37	150	2175	15	41	55	90	198																																																																																																																																																																																																																																																																																																																												
6919 0003	EF 154/150	1000	154	41	150	2175	15	45	62	90	198																																																																																																																																																																																																																																																																																																																												
6919 0017	EFR 154/150	1500	154	41	150	2175	15	45	62	105	231																																																																																																																																																																																																																																																																																																																												
6919 0018	EFR 154/150	1800	154	41	150	2175	15	45	62	105	231																																																																																																																																																																																																																																																																																																																												
6919 0019	EFR 154/150	2200	154	41	150	2175	15	45	62	105	231																																																																																																																																																																																																																																																																																																																												
6919 0009	EF 183/120	900	183	48	120	1740	12	43	59	90	198																																																																																																																																																																																																																																																																																																																												
6919 0001	EF 183/120	1000	183	48	120	1740	12	43	59	90	198																																																																																																																																																																																																																																																																																																																												
6919 0011	EFR 183/120	1500	183	48	120	1740	12	43	59	105	231																																																																																																																																																																																																																																																																																																																												
6919 0012	EFR 183/120	1800	183	48	120	1740	12	43	59	105	231																																																																																																																																																																																																																																																																																																																												
6919 0013	EFR 183/120	2200	183	48	120	1740	12	43	59	105	231																																																																																																																																																																																																																																																																																																																												

Flushing systems available on request on selected versions

Max Inlet pressure: 3 bar - 43.5 p.s.i.

Oil Capacity: 4,43 l 80W 90

Oil Capacity with Gearbox 5,88 l 80W 90

#### Connection Kit

2603001	116
2603007	11-3/16"
2603008	11-1/2"
3202007	116
2603004	11/16-0.010
2603003	11/16"
3203014	11/16"
2603009	116-0.010
2603002	116-0.010
2603004	116
3203015	116
3203012	116"
2603005	116"
2603006	116-0.010

| 
  | 
  |

## Accessories



Guns with Lances



Unloader Valves



Pulsation Dampeners

## Applications and Uses

EF - EFR



MUNICIPALITIES



MILITARY



CEMENT PLANTS

Contact us for more informations

Your Name (required)

Your Email (required)

Subject

Your Message

\*In compliance with articles 7-8-9 of E.R. 2016/679 I declare that I have read the information and consent to the processing of data for the purposes as per point a)

I authorize | 
  I do not authorize

Consent for "direct marketing" (this consent is optional). I declare that I have read the information and consent to the processing of data for the purposes as per point b) of this privacy policy and therefore consent to the receipt of advertising material/communications, such as brochures, invitations, newsletters, by post, e-mail, telephone, fax, sms and mms messages deriving from the Data Controller. It is herewith understood that the undersigned has the specific right to revoke this consent at any time, by contacting the Data Controller.

I authorize | 
  I do not authorize

Share This Product, Choose Your Platform!

